




PASS
SUMMIT 2016


A Crash-Course in Biml

Tim Mitchell, Tyleris Data Solutions





Please silence
cell phones



Explore Everything PASS Has to Offer

 FREE ONLINE WEBINAR EVENTS	 FREE 1-DAY LOCAL TRAINING EVENTS	 VOLUNTEERING OPPORTUNITIES
 LOCAL USER GROUPS AROUND THE WORLD	 ONLINE SPECIAL INTEREST USER GROUPS	 PASS COMMUNITY NEWSLETTER
 WHITE PAPERS SESSION RECORDINGS FREE ONLINE RESOURCES	 BUSINESS ANALYTICS TRAINING	 BA INSIGHTS NEWSLETTER



Session Evaluations

Your feedback is important and valuable.

3
ways to access

Submit by 5pm
Friday November 6th to
WIN prizes

Go to passSummit.com

Download the GuideBook App
and search: **PASS Summit 2016**

Follow the **QR code** link displayed
on session signage throughout the
conference venue and in the
program guide



Tim Mitchell
Data Architect,
Tyleris Data Solutions

Microsoft Data Platform MVP
Coauthor, SSIS Design Patterns
Dallas, Texas area
Does not like piña colodas or getting caught in the rain

TimMitchell.net [in /in/TimMitchell](https://www.linkedin.com/in/TimMitchell) [@Tim_Mitchell](https://twitter.com/Tim_Mitchell)

Agenda

- Overview of Biml
- BimlScript
- Practical uses
- Language Overview
- Demos

About the presenter

Tim Mitchell

- Business intelligence consultant
- Principal, Tyleris Data Solutions
- Microsoft Data Platform MVP
- TimMitchell.net
- @Tim_Mitchell



Logistics

- Schedule and break
- Slide deck and code



Overview of Biml

- Business Intelligence Markup Language
- User-friendly XML (*really, stop laughing*) to allow relatively easy design of BI assets in code






Overview of Biml

Patterns-based development


- Faster development
- More consistent development
- Reliable development



Overview of Biml

Patterns-based development

- Supports atomic package design



Overview of Biml

- Practical uses
 - Simple staging
 - Rapidly changing metadata
 - Large number of similar packages
 - Template engine

Overview of Biml

Patterns-based development

- Multiple unique patterns with low repetition = not usually a good fit



SSIS

Overview of Biml

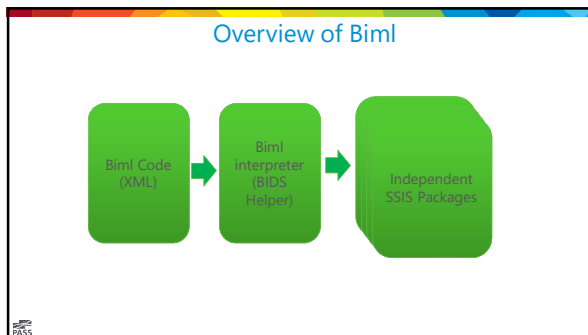
- Can be used against SSIS packages/projects
- SSAS cubes supported (in commercial version)

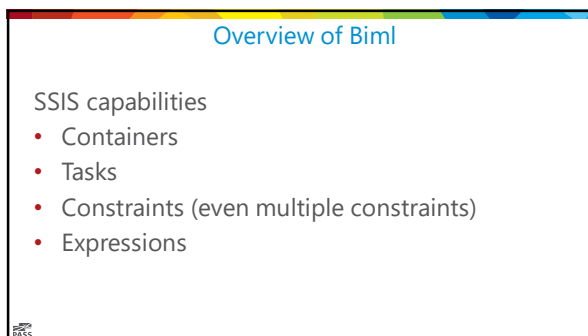
SSIS

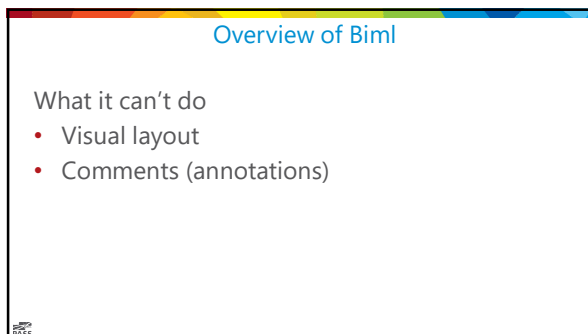
Overview of Biml

- BIDS Helper
- Biml Express
- Biml Online
- Mist (commercial tool)

SSIS









BimlScript

- Biml + .NET programming = SSIS awesomeness
- Pattern-based development for massive package generation




BimlScript

- Any .NET object or behavior
- C# or VB.NET
- Intellisense, etc.



Language structure

- XSD file to define structure
- Collections
 - Items



Language structure

```
<Biml xmlns="http://schemas.varigence.com/biml.xsd">
  <Connections>
    <OleDbConnection Name="AdventureWorks" ConnectionString="Provider=SQLNCLI10;Data Source=localhost..." />
  </Connections>
  <Packages>
    <Package Name="DemoPackage" ConstraintMode="Parallel">
      <Tasks>
        <ExecuteSQL Name="SQLT - Truncate Table" ConnectionName="AdventureWorks">
          <DirectInput>TRUNCATE TABLE [Sales].[Store]</DirectInput>
        </ExecuteSQL>
      </Tasks>
    </Package>
  </Packages>
</Biml>
```



Language structure

Packages

- Collection of SSIS package objects
- Multiple packages per Biml file



Language structure

Loops and containers


- Sequence containers
- Loops



Language structure

Tasks


- Support for all valid SSIS tasks
- Precedence constraints



Language structure

Data Flow


- Every source and destination available in SSIS
- Transformations



Language structure

Data Flow

- Easy data lineage through automatic mapping
- Manual overrides



Language structure

Variables and Parameters

- Define and set variables
 - Expressions
- Create parameters and set defaults
 - SSIS 2012+ only



Language structure

BimlScript

- Biml XML mixed with .NET code



Language structure

```
<# import namespace="System.IO" #>
<# string directory = "C:\\Where\\Packages\\Are\\Located\\"; #>
<Biml xmlns="http://schemas.varigence.com/biml.xsd">
  <Packages>
    <Package Name="Execute All Packages" ConstraintMode="Parallel">
      <Tasks>
        <# foreach (string filePath in Directory.GetFiles(directory, "*.dtsx") { #>
          <ExecutePackage Name="Run Package - <#FilePath#>"
            <ExternalFile ExternalFilePath="<#FilePath#>" />
          </ExecutePackage>
        <# } #>
      </Tasks>
    </Package>
  </Packages>
</Biml>
```



Language structure

- <# Code Block #>**
Any .NET Code (C# or Visual Basic)
- <#= Inline Code Block #>**
Calls the .NET ToString() method on the expression
Cannot be a statement
- <#@ Directive #>**
Set configuration options
- <#+ Module Level Code Block #>**
Functions that are callable from within code block

Language structure

Text Blocks

Text Blocks

XML

< ... >

```

<html xmlns="http://schemas.varigence.com/html.xsd">
  <Package>
    <Package Name="DemoPackage" constraintMode="Parallel" />
  </Package>
</html>

```

Language structure

Text Blocks

Directives

XML

<#@ ... #>

```

<#@ template language="C#" tier="0" #>
<#@ include file="1-Parameters.html" #>

```

Language structure

Standard Control Blocks

Control Blocks

Standard Control Blocks

C# or VB

<# ... #>

```

1 var sourceConnection = Runtime.BKConnections["Source"];
2 var importResult = sourceConnection.ImportDB("", "", ImportOptions.ExcludeForeignKey );

4
5 var sourceConnection = Runtime.BKConnections["Source"];
6 var importResult = sourceConnection.ImportDB("", "", ImportOptions.ExcludeForeignKey );

```

Pass

Language structure

Expression Control Blocks

Control Blocks

Expression Control Blocks

C# or VB

<# = ... #>

```

1 var sourceConnection = Runtime.BKConnections["Source"];
2 var importResult = sourceConnection.ImportDB("", "", ImportOptions.ExcludeForeignKey );

3 <html xmlns="http://schemas.varigence.com/html.xsd">
4   <Tables>
5     <Table> <var table in importResult.Tables> </>
6     <Table name="Staging_<table.SchemaName>_<table.TableName>" SchemaName="M_db">
7       <Columns>
8         <Column name="<table.TableName>">
9           <# = ... #>
10        </Column>
11      </Columns>
12    </Table>
13  </Tables>
14 </html>

```

Pass

Language structure

Class Feature Control Blocks

Control Blocks

Class Feature Control Blocks

C# or VB

<# = ... #>

```

1 <html xmlns="http://schemas.varigence.com/html.xsd">
2   <Packages>
3     <Package name="<package>">
4       <Package>
5         <# = ... #>
6       </Package>
7     </Packages>
8   </html>

9
10 // Note: Class Feature Control Block must be at the end of the file
11 private string upperCase(string originalValue)
12 {
13   return originalValue.ToUpper();
14 }
15


```

Pass

Language structure

Source control


- Biml files or SSIS packages?
- Why not both?



Language structure

The good:


- Rapid development of lots of packages
- Reusable patterns
- Built into Visual Studio (with BIDS Helper)
- It's free!




Language structure


The challenges:

- It's XML with C# (or VB.net)
- Intellisense
- Debugging





Demos



Resources

- BimlOnline.com
- BIDS Helper: bidshelper.codeplex.com
- BimlScript library/forum: bimlscript.com



Session Evaluations

Your feedback is important and valuable.

3
ways to access

Submit by 5pm Friday November 6th to **WIN** prizes

Go to passSummit.com

Download the GuideBook App and search: **PASS Summit 2016**

Follow the **QR code** link displayed on session signage throughout the conference venue and in the program guide